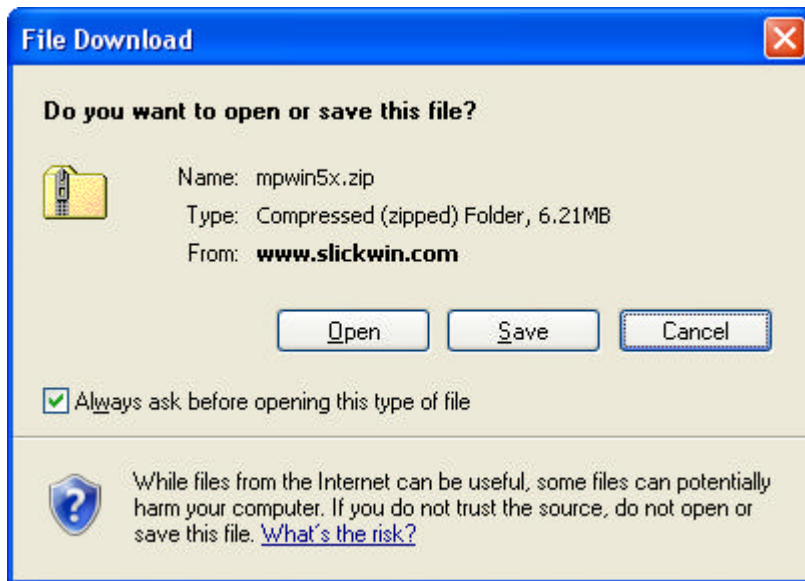
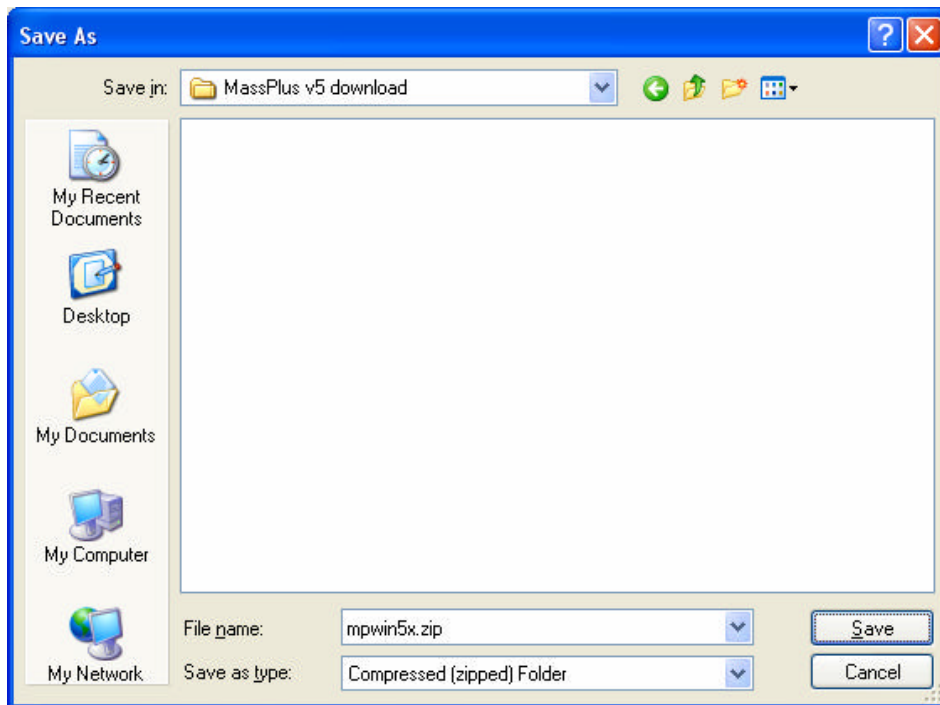


MassPlus v5.0 Installation

- Enter the download url into your browser window:
- Click on Save to save the file into your computer



- The Save As window should open. Create a new folder for MassPlus or save it into an existing folder. Normal default folder is Documents and Settings. In the following example, the file will be saved into the MassPlus v5 downloads folder.



- Click on Save to download and save mpwin5x.zip
- Go to the folder where you saved mpwin5x.zip;
- Right-click on mpwin5x.zip and extract all the files.

- Double-click on mpwin5x.exe to run the self-extracting installation program in the default folders.
- If you are running 32-bit Windows, MassPlus is installed in the folder:
C:\Program Files\CAD Systems Unlimited\MassPlus v5.0
- If you are running 64-bit Windows, MassPlus is installed in the folder:
C:\Program Files (x86)\CAD Systems Unlimited\MassPlus v5.0
- After installation, you can launch MassPlus via the Windows Start menu
- If you have not purchased a license, you can install the trial for ten days
- If you already have a serial number and auth code, you can proceed to install the license

If you have AutoCAD, IntelliCAD or any AutoCAD compatible software with autolisp support, you can run MassPlus v5.0 via autolisp. These routines will look for MassPlus in the default folders specified above.

Copy the corresponding lisp and script files to the AutoCAD executable folder or to a folder in the AutoCAD support file path.

For 32-bit Windows systems, copy mpwin.lsp and mpwin.scr
For 64-bit Windows systems, copy mpwin-x86.lsp and mpwin-x86.scr

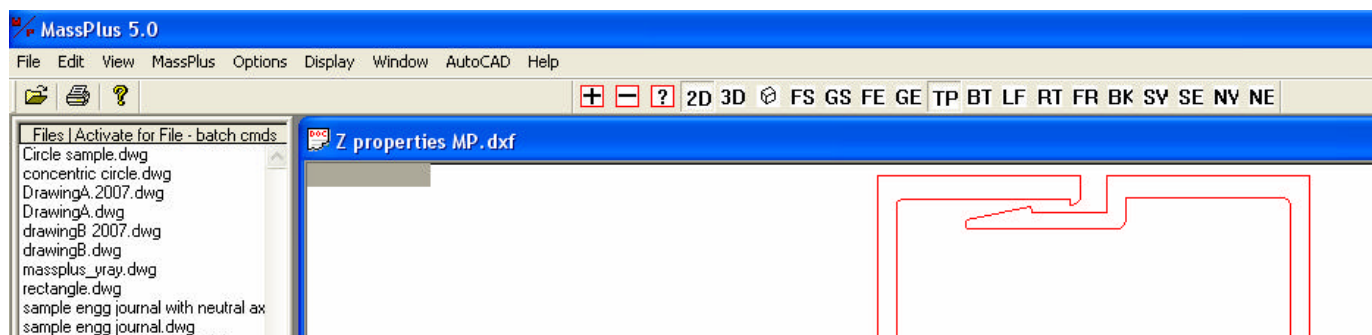
More information on how to use AutoCAD with MassPlus is available in the install.htm and the compiled help file massplus50.chm in the downloaded zip file mpwin5x.zip..

MassPlus v5.0 installation is different from previous versions. It is totally independent of AutoCAD. You do not have to install the files into the AutoCAD executables folder. There are no script files to run.

MassPlus v5.0 has an integrated viewer for drawings and DXF. To analyze a file, navigate to its folder using the directory tree at the bottom left of the MassPlus screen.

The drawing names will be displayed in the File List window at the top-left of the screen. Use must first open the drawing by double-clicking on its filename. The drawing will then be displayed in the Graphics Window.

Activate the Graphics Window by clicking anywhere on it. The MassPlus menu will be displayed.



- Click on MassPlus – Settings to set your units of measure, conversion units, decimal places, etc.
- Click on MassPlus – Calculate to perform calculations on the current drawing.

A screen will be displayed showing the results. You may then print the results or export them to a comma-delimited file (CSV) which can be opened by Excel. You may also later import the file into an AutoCAD using the Import- Ole Object AutoCAD command.

Section Property	Value	Conv. Value	Accuracy
Number of entities processed:	184		
Component Areas used in calculations:	20000		
Area	2.4931 in ²	1608.4286 mm ²	
X-Centroid relative to drawing origin	195.7556 in	4972.1932 mm	
Y-Centroid relative to drawing origin	44.1260 in	1120.8015 mm	
X-Centroid relative to section origin	1.2254 in	31.1249 mm	
Y-Centroid relative to section origin	3.6594 in	92.9475 mm	
Section Width (Maximum)	2.5000 in	63.5000 mm	
Section Height (Maximum)	7.1150 in	180.7209 mm	
Ixx Centroidal Moment of Inertia about the X axis	13.6789 in ⁴	5693578.0171 m...	
Iyy Centroidal Moment of Inertia about the Y axis	2.0233 in ⁴	842181.2721 mm ⁴	
Iz Polar moment of Inertia about the centroid	15.7022 in ⁴	6535759.2891 m...	
Pxy Product of Inertia about the centroidal axes	-0.0551 in ⁴	-22918.2891 mm ⁴	
rxx Radius of gyration about X axis of the centroid	2.3424 in	59.4965 mm	
ryy Radius of gyration about Y axis of the centroid	0.9009 in	22.8824 mm	
Sxx Section Modulus thru y-value of the centroid	3.7381 in ³	61255.8334 mm ³	
Syy Section Modulus thru x-value of the centroid	1.6512 in ³	27058.0950 mm ³	
Sxx max thru the y-value of centroid	3.9584 in ³	64866.7788 mm ³	
Sxx min thru the y-value of centroid	3.7381 in ³	61255.8334 mm ³	
Syy max thru the x-value of centroid	1.6512 in ³	27058.0950 mm ³	
Syy min thru the x-value of centroid	1.5874 in ³	26013.2636 mm ³	
Zx - Plastic Section Modulus	102.0626 in ³	1672507.1368 mm ³	
Plastic Neutral Axis distance from section bottom	3.1878 in	80.9704 mm	
Plastic Neutral Axis distance from section top	3.9272 in	99.7505 mm	
Ix'x' Moment of Inertia about drawing X axis	4867.8999 in ⁴	2026172926.675...	
Iy'y' Moment of Inertia about drawing Y axis	95537.4917 in ⁴	39765706387.52...	
Iz' Polar moment of Inertia about drawing's origin	100405.3917 in ⁴	41791879314.19...	

Buttons: OK, Print, Export to CSV

If you are running a demo version, MassPlus will show **accurate** results for Area, the X and Y values of the centroid, the Moment of Inertia about the X-axis, Product of Inertia about the drawing's origin, and the Radius of Gyration about the X-axis of the drawing's origin. The results are the same as those of the licensed version and are marked as "Licensed" in the Accuracy column. Results showing "Demo" in the Accuracy column are estimated values for demo purposes only.