

# AutoCAD for Windows Interface

You may interface directly with AutoCAD Windows if an AutoCAD session is running. The available commands are Open, Insert, and Xref.

If you have multiple AutoCAD sessions running, these commands will only work on the first AutoCAD session!

If AutoCAD is not running when you execute these commands, Slick! displays an error message.



## ACAD Menu

After executing any of the following commands, select the AutoCAD Window to bring it in front of the Slick! Window to continue work in AutoCAD.

### *Open*

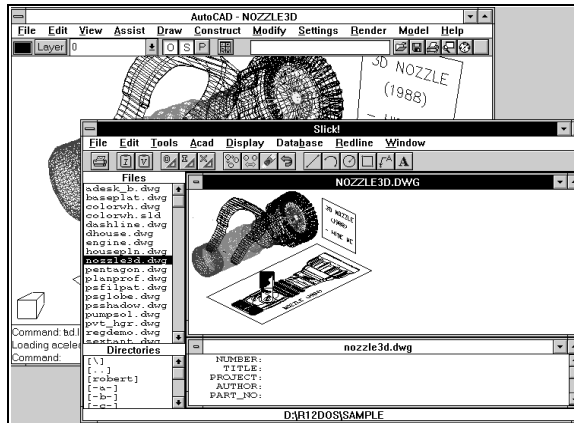


You may use this command to open the file you are currently viewing in AutoCAD for Windows.

If you are currently working on an AutoCAD drawing, AutoCAD will prompt if you wish to save or discard the changes to the current drawing before loading the file you have selected in Slick!

**Opening a drawing in AutoCAD will close that drawing in Slick!**

The following screen shows Slick! opening MPART-3D.DWG in AutoCAD for Windows.



## *Insert*



Use this command to insert the drawing you are currently viewing in Slick! as a drawing block into the drawing being edited in AutoCAD for Windows.

If the block being inserted already exists in the drawing as an internal block, AutoCAD will not redefine the block! This is true even if the block you are inserting in Slick! is different from the internal block defined in the drawing!

AutoCAD will prompt for an insertion point and scaling parameters. For more information, consult your AutoCAD manual regarding block insertions.

## *Xref*



Use this command to attach the drawing you are currently viewing in Slick! as an external reference into the drawing being edited in AutoCAD for Windows.

As in block insertion, AutoCAD will prompt you for an insertion point. For more information, consult your AutoCAD manual regarding the Xref Attach command.